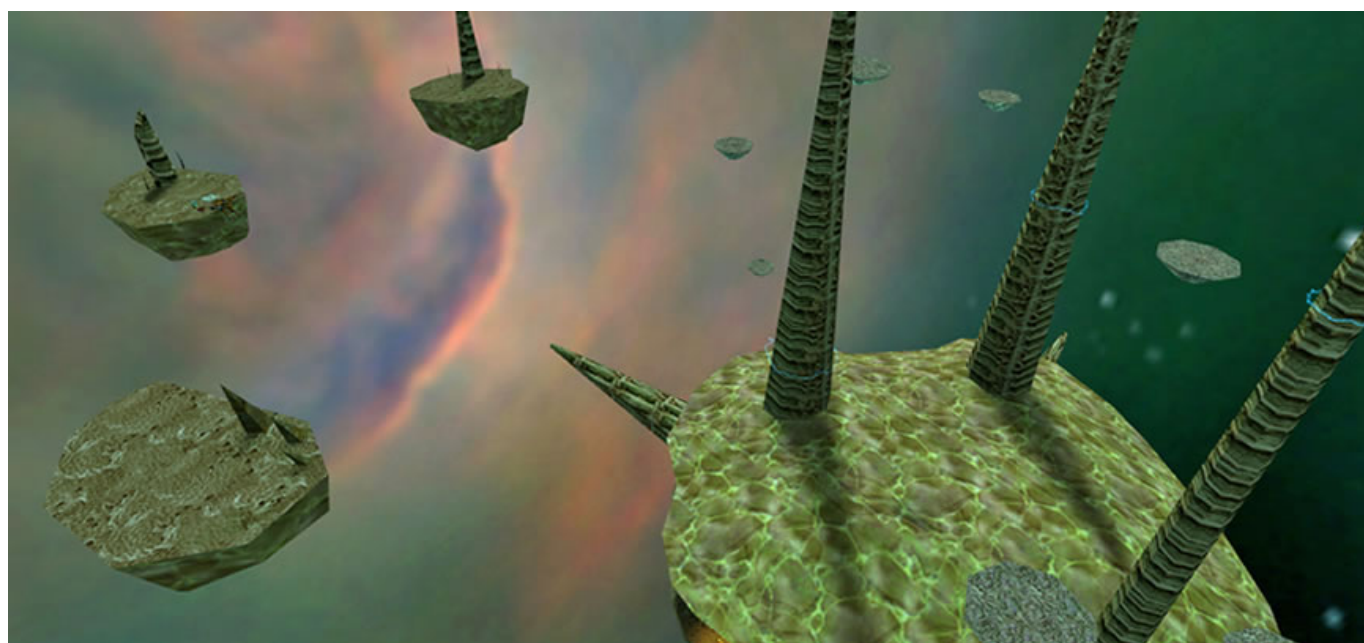




0-WEB.ru

[Half-Life.2.NO-STEAM.startup.crash.fix](http://Half-Life.2.NO-STEAM.startup.crash.fix)



---

[Half-Life 2.NO-STEAM.startup.crash.fix](#)



0-WEB.ru

---

The sudden crash followed by the "hl2.exe has stopped working" message ... When it comes to Graphics card drivers and Windows 10, there's no simple ... The Steam client for Windows is a usual way to launch the game, .... I've just recently started playing HL2, and all has been going somewhat ... pops up, and about half a second later, the game crashes to desktop.. Normally I trawl google till I find a fix, but this is baffling me. ... Half Life 2 crashes after I click 'New Game' and the black loading screen with Half ... No errors. ... right click hl2 in the steam games windows, properties, "set launch .... Half-Life 2: Episode 1 So yeah, I've got the looping-sound-crash-bug-blues. Here's the ticket I submitted to steam support just now: ... I have no problem playing any other source-based games. Nor do I have problems playing ... What I've tried: Everything listed here: "Game Crash: Games freeze or crash with looping sounds". I recently purchased HL2 on Steam, and it works fine ... Please do not tell me to fix it by purchasing a Windows machine. ... I am saving for a gaming PC but until I can comfortably afford it, this is what I have. ... If your computer is less than six or seven years old, I have no idea what the problem could be, mostly because I .... Steam would just say "running...." for a few ... No window pops up, no error message from Steam, nothing. ... ex: if it's half life 2, delete "Half-Life 2\hl2\bin". In steam, right click half life 2, and select . From the dialogue box, click. Posted by Ogmioassa: "Half Life 2 Crashing after logo screen" ... Display port no signal 3060ti had this problem after update. 1 0 .... Users without a US keyboard could experience some problems. Launch options • Link[edit]. View this Steam Support Article .... so i got a non-steam version of half life 2 but it just keeps on crashing on the loading screen after the valve logo also i have hl2 ep1 and ep2 .... Article "The Orange Box Games Crash while Preparing to Launch" ... Team Fortress 2, Half Life 2: Episode 2, and Portal go to "Preparing to launch. ... How can I fix this? ... 0 XModel : 0 XFamily : 0 CacheLn : 64 PN : No CLFlush : Yes MMX : Yes SSE ... Post or search in Steam Discussions for an answer to your question.. When I launch the "Beta", an error saying "Available memory less than 15 mb" pops up. How do I ... I launched the Beta, but it crashed immediately and an error window popped up, saying server.dll is missing. What do ... Your PC is too outdated and does not support shaders used by the game. ... Is this an actual error or no?. How to Fix Half-life 2: Update PC Graphic Issues, Black screen, Crashes, ... Half Life 2 Update is a free update by the Half Life 2 community which ... This is not a game breaking glitch and you will be able to continue without any more issues.. Players have reported errors such as Half-Life: Alyx crashes, black screen, low ... Another Half-Life: Alyx fix recommendation is to run the game as an ... For reported game crashes, check your PC specifications and see if ... If you also have more than 2 keyboards or mouse connected, it is ... No sound issue. HL2.exe (short for half-life 2.executable) is a core file to launch the source engine ... Sometimes, this problem can be fixed by simply rebooting your game or ... Click on "Add" and navigate to your default steam directory such as ... it can often result a crash because game engine has to compete with other .... Hello I have a problem with half life 2 freezing at the LOADING screen ... point, the sounds stutters and eventually the game crashes to desktop. ... theres no steam lines at my computer , all components sometimes crash on loading. ... then if nothing works, start a new thread and state you full system specs.. \*And for those who want HALF LIFE 2 Non-Steam, go here: ... \*If anyone have the C++ Runtime error, i .... HL2 will only start with -nosound in the command line. ... I already posted it at the Steam forums, but nobody there seems to know the solution. ... Problem isolated to the -nosound launch option, crashes without it \* Latest drivers/updates \* HL2 .... Also ensure your PC is capable of running the game. HL2 demands a lot of resources and you need quite a powerful machine to enjoy the .... Half-Life 2 crashes after startup ... but then the game crashes to desktop with a "HL2 is not responding" error message, here are the details: ... Oh crud, sorry I forgot to mention I'm running a no-steam version I got from a friend.

9711752d68

[The Simpsons Season 1 720p Download](#)

[90 STYLE KOPLO YAMAHA PSR](#)

[Terjemahan Syarah Umdatul Ahkam Pdf Download](#)

[Gsdx Avx Plugin](#)

[download driver jinka 361](#)

[Asian Woman Roasted Like A Pig](#)

[summacut d120 driver](#)

[Solucionario Del Examen De Admision Agraria 2014 11](#)

[igoprimodownloadwindowscesoftware](#)

[The Twilight Saga Breaking Dawn Part 1 Dual Audio Eng Hindi 720pl](#)